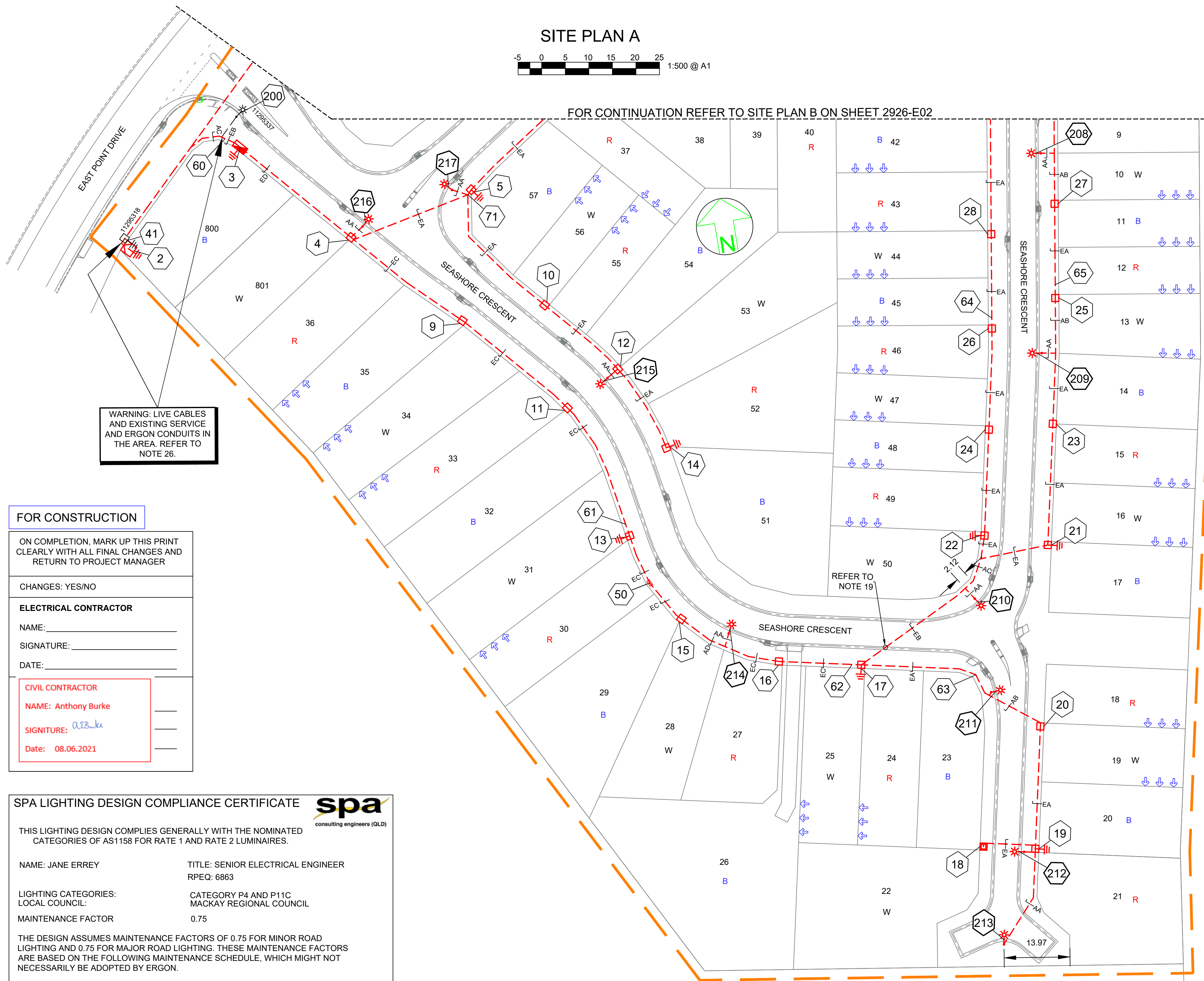


SITE PLAN A

-5 0 5 10 15 20 25 1:500 @ A1

FOR CONTINUATION REFER TO SITE PLAN B ON SHEET 2926-E02



WARNING: LIVE CABLES
AND EXISTING SERVICE
AND ERGON CONDUITS IN
THE AREA. REFER TO
NOTE 26.

FOR CONSTRUCTION

ON COMPLETION, MARK UP THIS PRINT
CLEARLY WITH ALL FINAL CHANGES AND
RETURN TO PROJECT MANAGER

CHANGES: YES/NO

ELECTRICAL CONTRACTOR

NAME: _____
SIGNATURE: _____
DATE: _____

CIVIL CONTRACTOR

NAME: Anthony Burke

SIGNATURE: *Anthony Burke*

Date: 08.06.2021

SPA LIGHTING DESIGN COMPLIANCE CERTIFICATE



THIS LIGHTING DESIGN COMPLIES GENERALLY WITH THE NOMINATED
CATEGORIES OF AS1158 FOR RATE 1 AND RATE 2 LUMINAIRES.

NAME: JANE ERREY TITLE: SENIOR ELECTRICAL ENGINEER
RPEQ: 6863

LIGHTING CATEGORIES: CATEGORY P4 AND P11C
LOCAL COUNCIL: MACKAY REGIONAL COUNCIL
MAINTENANCE FACTOR 0.75

THE DESIGN ASSUMES MAINTENANCE FACTORS OF 0.75 FOR MINOR ROAD
LIGHTING AND 0.75 FOR MAJOR ROAD LIGHTING. THESE MAINTENANCE FACTORS
ARE BASED ON THE FOLLOWING MAINTENANCE SCHEDULE, WHICH MIGHT NOT
NECESSARILY BE ADOPTED BY ERGON.

1. LAMPS SHALL BE REPLACED AT 36- MONTH INTERVALS.
2. ALL THAT TIME, LUMINAIRES SHALL BE CLEANED, INSPECTED AND MAINTAINED.
3. VEGETATION SHALL BE KEPT CLEAR OF STREET LIGHTS.
4. INSPECTION PATROLS AND SPOT LAMP REPLACEMENT SHALL MAINTAIN SERVICE AVAILABILITY AT NO LESS THAN 95%.
5. LUMINAIRES AND LAMPS SHALL BE REPLACED WITH EXACT EQUIVALENTS.

ALL LIGHTING CALCULATIONS ARE AVAILABLE UPON REQUEST.

FOR LIGHTING ARRANGEMENT, SPACINGS, MOUNTING HEIGHTS, OUTREACH
DETAILS AND SIGNIFICANT ROAD FEATURES, REFER TO DRAWING.

WORKPLAN NOTES

1. FOR STANDARD UNDERGROUND DUCT SECTIONS REFER TO UNDERGROUND CONSTRUCTION MANUAL DRAWING 5168.
2. POLYMERIC COVER TO BE INSTALLED OVER CONDUITS OUTSIDE NORMAL ERGON ALIGNMENT AS PER ERGON DRAWING. 5022-1 AND 5124-1 & 2.
3. STANDARD TRENCH ALIGNMENT IS 0.3 TO 0.9 METRES OFF PROPERTY ALIGNMENT SUBJECT TO LOCATION OF OTHER SERVICES. REFER TO UNDERGROUND CONSTRUCTION MANUAL DRAWING 5164 AND DRAWING 5228 FOR TRENCHES WITH NBNcO CONDUITS.
4. STREETLIGHT POLE FOOTINGS SHALL BE LOCATED PERPENDICULAR TO THE KERB, AT THE PROLONGATION OF THE SIDE PROPERTY BOUNDARY, UNLESS DETAILED OTHERWISE. WHERE DIMENSIONS ARE SHOWN THEY TAKE PRECEDENCE OVER GRID COORDINATES.
5. ALL CONDUITS SHALL BE CONTINUOUS UNLESS DETAILS OTHERWISE.
6. FOR STANDARD UDC CONSTRUCTION PRACTICES REFER TO UNDERGROUND CONSTRUCTION MANUAL DRAWINGS 5022, 5085 AND 5124.
7. INSTALLATION OF DISTRIBUTION CABINET REQUIRED IN ROAD RESERVE ADJACENT TO LOT 800, STATION 3. CABINET SITE IS TO BE 850mm x 300mm. REFER TO ERGON DWG VC115120-ERG.
8. DEVELOPER SHALL INSTALL DISTRIBUTION CABINET FOUNDATION. REFER TO UNDERGROUND CONSTRUCTION MANUAL DRAWINGS-ASSEMBLY- 534 & 535.
9. THERE ARE 12 x 25W LED SYLVANIA STREET AEROSCREEN, AEROSCREEN MAJOR ROAD STREETLIGHTS ON RATE 2. 3 x 24W LED SYLVANIA STREET MINOR ROAD, 6 x 50W PHILIPS ROAD FLAIR,
10. STREETLIGHT DESIGN TO AS1158 CATEGORY P4 AND CATEGORY P11C ON CARPARK.
11. MINOR STREETLIGHTS - THE DEVELOPER SHALL SUPPLY AND INSTALL STREETLIGHT BASES. FOUNDATION DEPTH IS 1200mm FOR MINOR STREETLIGHTS. REFER TO LIGHTING CONSTRUCTION MANUAL DRAWING 1-6-4-1 & 2. CENTRELINE OF STREETLIGHT SHALL BE AT 0.9m FROM INVERT OF KERB. WHERE THE ROAD IS UN-KERBED OR THERE IS A FLUSH KERB, CENTRELINE OF STREETLIGHT SHALL BE 1.3m FROM THE OUTER EDGE OF THE BITUMEN.
12. MAJOR STREETLIGHTS - THE DEVELOPER SHALL SUPPLY AND INSTALL STREETLIGHT BASES. FOUNDATION DEPTH IS 2250mm FOR MAJOR STREETLIGHTS. REFER TO LIGHTING CONSTRUCTION MANUAL DRAWING 1-5-6-1 & 2 FOR BPM FOOTINGS. FOR ALL FOOTPATHS, CENTERLINE OF STREETLIGHT SHALL BE 1.2m FROM THE INVERT OF KERB AND CHANNEL. WHERE THE ROAD IS UN-KERBED, CENTERLINE OF STREETLIGHT SHALL BE 1.5m FROM THE EDGE OF BITUMEN.
13. THE LIGHTING DESIGN INCLUDES AN ALLOWANCE FOR CONSTRUCTION TOLERANCE OF LIGHT POLES SUCH THAT ANY STREETLIGHT CAN BE POSITIONED UP TO A MAXIMUM OF ±350mm LONGITUDINALLY FROM THE POSITION SHOWN AND UP TO 100mm MAXIMUM FURTHER AWAY FROM KERB EDGE, INCLUDING POLES WITH GRID COORDINATES, AND STILL MAINTAIN COMPLIANCE.
14. CONFIRM ALL CONDUIT AND CABLE LENGTHS PRIOR TO INSTALLATION.
15. FOR BATTLEAXE BLOCKS, SERVICE CONDUITS MUST BE EXTENDED 2m PAST THE EXTENT OF DRIVEWAY. SERVICE CONDUITS TO BE 80mmHD TO AS3000 WHERE BATTLEAXE BLOCKS.
16. WHERE SHOWN, 35mm sq ANNEALED BARE Cu EARTH SHALL BE INSTALLED AT BOTTOM OF TRENCH, IN NATURAL SOIL, BELOW BEDDING SAND, LOCATED A MINIMUM OF 50mm HORIZONTALLY TOWARDS PROPERTY BOUNDARY FROM CONDUITS (HV OR LV) INSTALLED ON PROPERTY BOUNDARY SIDE OF TRENCH. COIL 2m OF CABLE AT SPECIFIED STATIONS IN THE CONDUIT DUCTING SCHEDULE AND ALL REQUIRED JOINTS FOR CONNECTION BY ELECTRICAL CONTRACTOR. THE USE OF THE EARTH ROD CONNECTOR (U-BOLT, IIN. 0719437) IS NOT ACCEPTABLE FOR CONDUCTOR / CABLE TO CONDUCTOR / CABLE CONNECTIONS. IN ADDITION PARALLEL GROOVE CLAMPS ARE NOT ACCEPTABLE FOR JOINTING OR CONNECTING EARTHS BELOW GROUND LEVEL. ACCEPTABLE METHODS SHALL BE EITHER A CRIMP LINK OR A 'C' TYPE COMPRESSION CONNECTOR. CRIMP LINKS AND 'C' TYPE COMPRESSION CONNECTORS ARE AVAILABLE FROM ERGON ENERGY STORES IIN. 0157746 AND IIN. 2406222 RESPECTIVELY.
17. IN ACCORDANCE WITH ELECTRICAL SAFETY ACT, A SAFETY OBSERVER MUST BE PRESENT AT ALL TIMES WHEN WORKING IN THE VICINITY OF ENERGISED CABLES. CONTACT ERGON ENERGY ON 131046.
18. ELECTRONIC CABLE MARKERS (ECM'S) ARE TO BE SUPPLIED AND INSTALLED AT ENDS OF ALL SPARE CONDUITS INCLUDING (SPARE ROAD CROSSINGS, CONDUIT STUBS, FOR FUTURE STAGES, SPARE CONDUITS FOR FUTURE HV, ETC) AND AT ALL CABLE JOINTS. REFER TO ERGON STANDARD SPECIFICATIONS RSC07, RSC08, & RSM02.
19. WHERE NOTED ON THE DESIGN, CONCRETE COVER SHALL BE INSTALLED ABOVE CONDUIT, WHERE CONDUIT BURIAL DEPTH IS LESS THAN THAT SPECIFIED IN UNDERGROUND CONSTRUCTION MANUAL DRAWING 5163. FOR FOOTPATHS REFER TO UNDERGROUND CONSTRUCTION MANUAL DRAWING 5016. FOR ROAD CROSSINGS REFER TO UNDERGROUND CONSTRUCTION MANUAL DRAWING 5017.
20. EXTRA CONDUIT BENDS SHALL BE INSTALLED TO ACHIEVE INCREASED BURIAL DEPTH AT ROAD CROSSINGS. REFER TO UNDERGROUND CONSTRUCTION MANUAL DRAWING 5022.
21. ALL CONTRACTORS MUST CARRY OUT A DIAL BEFORE YOU DIG ENQUIRY BEFORE COMMENCING ANY EXCAVATION.
22. PARALLEL FEED FROM STN 2 TO 3. BOTH CABLES TO BE TERMINATED TOGETHER AT BOTH ENDS. PARALLELING KITS REQUIRED AT STN 2 & 3.
23. INSTALL PILLAR OFFSET IN ACCORDANCE WITH ERGON DRAWING 5196-2.
24. CONTRACTOR TO ENSURE MACKAY REGIONAL COUNCIL POLICY 063 AND 15.05 ARE ADHERED TO WITH RESPECT TO CLEARANCES BETWEEN ELECTRICAL OR COMMUNICATIONS INFRASTRUCTURE AND COUNCIL SERVICES.
25. CONTRACTOR TO SUPPLY AND INSTALL ENGRAVED LABEL LOCATED ON LIGHTING TERMINAL STATING "LIGHT FED FROM PILLAR ASSET NUMBER _____".
26. **WARNING:** LIVE CABLES AND EXISTING SERVICES IN AREA. CONTRACTOR TO USE POT HOLING, HYDRO-VAC EXCAVATION AND CABLE LOCATION WHEN INSTALLING NEW INFRASTRUCTURE.
27. CONTRACTOR SHALL NOT INSTALL PITS AT THE BOTTOM OF DRAINS, VEHICLE PATHS, ROADWAYS, DRIVEWAYS, DRAIN INVERTS, BIKEWAYS, RAMPS, PEDESTRIAN ALIGNMENTS, WHEELCHAIR ACCESS OR PATHWAYS. WHERE PITS ARE INSTALLED IN THE MEDIAN, PITS SHALL BE OFFSET FROM THE CENTER OF THE MEDIAN TO PREVENT INSTALLATION IN THE BOTTOM OF DRAIN AND TO ALLOW CONDUITS TO PASS BY THE LIGHT FOOTING.
28. STAGE 1R-1 TO BE BUILT CONCURRENTLY WITH STAGE 1A. STAGE 1A PLANS TO BE READ IN CONJUNCTION WITH DWG 2915-E01-E04 FOR COORDINATION WITH CONSTRUCTION OF STAGE 1R-1. CONTRACTOR TO CONFIRM STAGING WITH DEVELOPER PRIOR TO CONSTRUCTION.
29. CONTRACTOR TO SUPPLY AND INSTALL LUMINAIRE. LUMINAIRES TO BE DIRECTLY PURCHASED FROM EITHER IAN BOLLAM (SYLVANIA) ON 0400385979 FOR THE GERARD LUMINAIRES AND ANDREW C/HASE ON 0411258509 (SIGNIFY) FOR THE PHILIPS LUMINAIRES.
30. CONTRACTOR TO INSTALL LV CABLE JOINT IF REQUIRED FOR CABLE AT STN 3 TO 22 & 3 TO 21. ELECTRICAL CONTRACTOR TO MONITOR PULLING TENSION TO DETERMINE IF JOINT IS REQUIRED.
31. INSTALLATION OF PADMOUNT SUBSTATIONS REQUIRED IN ROAD RESERVE ADJACENT LOT LOT 800 STN 2. PADMOUNT SITE IS TO BE 3.0m x 2.8m. REFER TO UNDERGROUND CONSTRUCTION MANUAL DRAWING 5000.
32. INSTALL PADMOUNTED SUBSTATION EARTHING - COMMON EARTH ARRANGEMENT. REFER TO UNDERGROUND CONSTRUCTION MANUAL DRAWING 5013 AND RMU DWG. 5221.
33. INSTALL LUMINAIRE STREETLED3 24W 2.2K SEMI CUT OFF WITH LOUVRE AT STN 220, 221 AND 222.



Code	Date	Description	Revised	Code	Date	Description	Approved
D	30/06/20	UPDATED LAYOUT - NOTES ADDED	MD				
C	11/06/20	FOR APPROVAL - RD XING ADDED	MD				
B	06/05/20	LAYOUT CHANGED & ADDED SUB	MD				
A	06/12/19	FOR CONSTRUCTION	MD				

CLIENT:
EASTPOINT MACKAY PTY LTD

C/- URBEX PTY LTD
P.O BOX 197 WYNNUM QLD 4178
Ph 07 3906 7444 Fax
CIVIL ENGINEER
EMPOWER ENGINEERS

P.O. BOX 197
WYNNUM QLD 4178
Ph 07 3893 7000 Fax 07 38934088



Tel: (07) 4032 3311 Fax: (07) 4032 5633
PO Box 664 North Cairns QLD 4870
Email Address - admin@spaconsulting.com.au
A business unit of SPA Consulting Engineers (QLD) Pty Ltd a/c.n. 010844416

LEGEND

◆◆◆ ZERO LOT BOUNDARY
— HV DUCT
— LV DUCT
— LIGHTING DUCT
— 35mm sq ANNEALED BARE COPPER EARTH

----- CABLE EXISTING
- - - - - CABLE PLANNED
- - - - - CABLE RECOVER
— EQUIPMENT EXISTING
— EQUIPMENT RECOVER
— EQUIPMENT PLANNED

□ SUBSTATION
✓ HV ISOLATING DEVICE
I LV ISOLATING DEVICE
□ NORMAL PILLAR
□ CROSS ROAD PILLAR
□ LINKING PILLAR

□ COMMERCIAL/ INDUSTRIAL PILLAR
□ DISTRIBUTION CABINET
* STREETLIGHT
— EARTH
● POLE
□ CABLE JOINT

Drawing Title	Date	Scale	Drawn	RPEQ Design Certification	Sheet	Project Description	ERGON Project Number	SPA Drawing Number	Revision
EAST POINT MACKAY STAGE 1A UDC UG ELECTRICAL RETICULATION SITE PLAN A & WORKPLAN NOTES	DECEMBER 2019	1:500@A1	MD	Jane Errey 6863	1 OF 6	EAST POINT MACKAY STAGE 1A MACKAY HARBOUR, QLD 4740	WR-1384495	2926-E01	D

Rev Date 29-8-19	PUBLIC LIGHTING SCHEDULE						
STN NO	SITE LABEL	ACTION	CONSTRUCTION CODE	RATE	TARIFF OWNER	MOUNTING HEIGHT (m)	REMARKS
200	11295337	EXISTING					
201	11295314	EXISTING					
202		INSTALL	SLED GL 0250 A2.2	RATE 2	MRC	7.5	REFER TO BELOW NOTES .
203		INSTALL	SLED GL 0250 A2.2	RATE 2	MRC	7.5	REFER TO BELOW NOTES .
204		INSTALL	SLED PH 0509A2.2	RATE 2	MRC	9	REFER TO BELOW NOTES .
205		INSTALL	SLED PH 0509A2.2	RATE 2	MRC	9	REFER TO BELOW NOTES .
206		INSTALL	SLED PH 0509A2.2	RATE 2	MRC	9	REFER TO BELOW NOTES .
207		INSTALL	SLED PH 0509A2.2	RATE 2	MRC	9	REFER TO BELOW NOTES .
208		INSTALL	SLED GL 0250 A2.2	RATE 2	MRC	7.5	REFER TO BELOW NOTES .
209		INSTALL	SLED GL 0250 A2.2	RATE 2	MRC	7.5	REFER TO BELOW NOTES .
210		INSTALL	SLED PH 0509A2.2	RATE 2	MRC	9	REFER TO BELOW NOTES .
211		INSTALL	SLED GL 0250 A2.2	RATE 2	MRC	7.5	REFER TO BELOW NOTES .
212		INSTALL	SLED GL 0250 A2.2	RATE 2	MRC	7.5	REFER TO BELOW NOTES .
213		INSTALL	SLED GL 0250 A2.2	RATE 2	MRC	7.5	REFER TO BELOW NOTES .
214		INSTALL	SLED GL 0250 A2.2	RATE 2	MRC	7.5	REFER TO BELOW NOTES .
215		INSTALL	SLED GL 0250 A2.2	RATE 2	MRC	7.5	REFER TO BELOW NOTES .
216		INSTALL	SLED GL 0250 A2.2	RATE 2	MRC	7.5	REFER TO BELOW NOTES .
217		INSTALL	SLED PH 0509A2.2	RATE 2	MRC	9	REFER TO BELOW NOTES .
218		INSTALL	SLED GL 0250 A2.2	RATE 2	MRC	7.5	REFER TO BELOW NOTES .
219		INSTALL	SLED GL 0250 A2.2	RATE 2	MRC	7.5	REFER TO BELOW NOTES .
220		INSTALL	SLED GL 0240 A2.2	RATE 2	MRC	7.5	REFER TO NOTE 33 AND BELOW.
221		INSTALL	SLED GL 0240 A2.2	RATE 2	MRC	7.5	REFER TO NOTE 33 AND BELOW.
222		INSTALL	SLED GL 0240 A2.2	RATE 2	MRC	7.5	REFER TO NOTE 33 AND BELOW.

SLEDGL0250A2.2 IS A GERARD LIGHTING STREETLED MK III 25W 2.2K AEROSCREEN LUMINAIRE COMPLETE WITH A -5 DEGREE ADAPTOR. REFER NOTE 29

SLEDPH0509A2.2 IS PHILIPS 50W ROADFLAIR 2.2K AEROSCREEN LUMINAIRE COMPLETE WITH A -5 DEGREE ADAPTOR. REFER NOTE 29

SLEDGL0240A2.2 IS A GERARD LIGHTING STREETLED MK III 24W 2.2K LUMINAIRE WITH STANDARD VISOR AND LOUVRE. REFER NOTE 29

FOR CONSTRUCTION

ON COMPLETION, MARK UP THIS PRINT CLEARLY WITH ALL FINAL CHANGES AND RETURN TO PROJECT MANAGER

CHANGES: YES/NO

ELECTRICAL CONTRACTOR

NAME: _____

SIGNATURE: _____

DATE: _____

CIVIL CONTRACTOR

NAME: Anthony Burke

SIGNATURE: *asb*

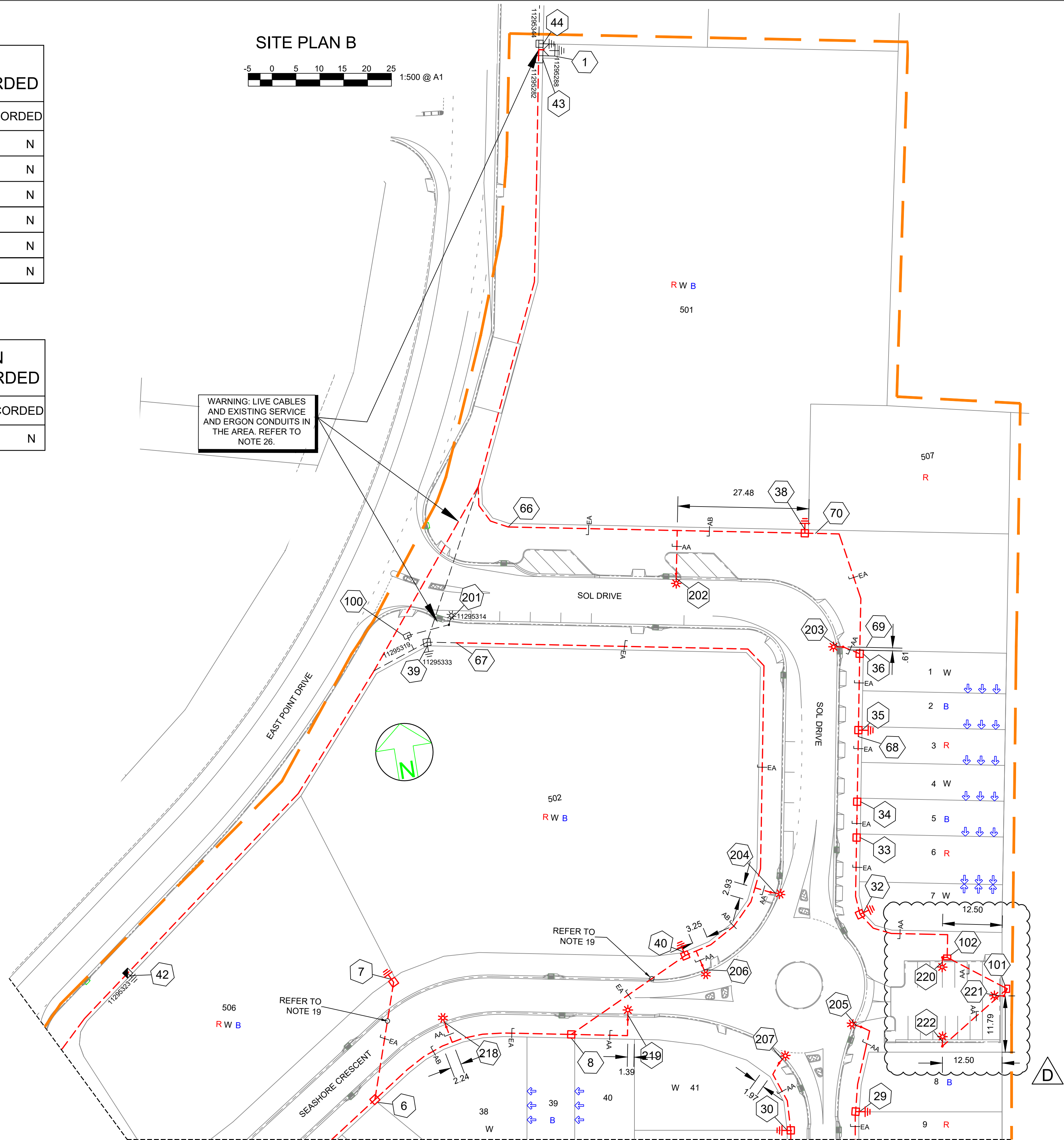
Date: 08.06.2021

LV PULLING TENSION CALCULATED AND RECORDED

STATION FROM	STATION TO	CALCULATED	RECORDED
1	38	2,520.78 N	N
3	22	7,756.35 N	N
3	50	2,162.69 N	N
50	22	1,838.28 N	N
3	21	11,398.22 N	N
50	21	2,620.57 N	N

HV PULLING TENSION CALCULATED AND RECORDED

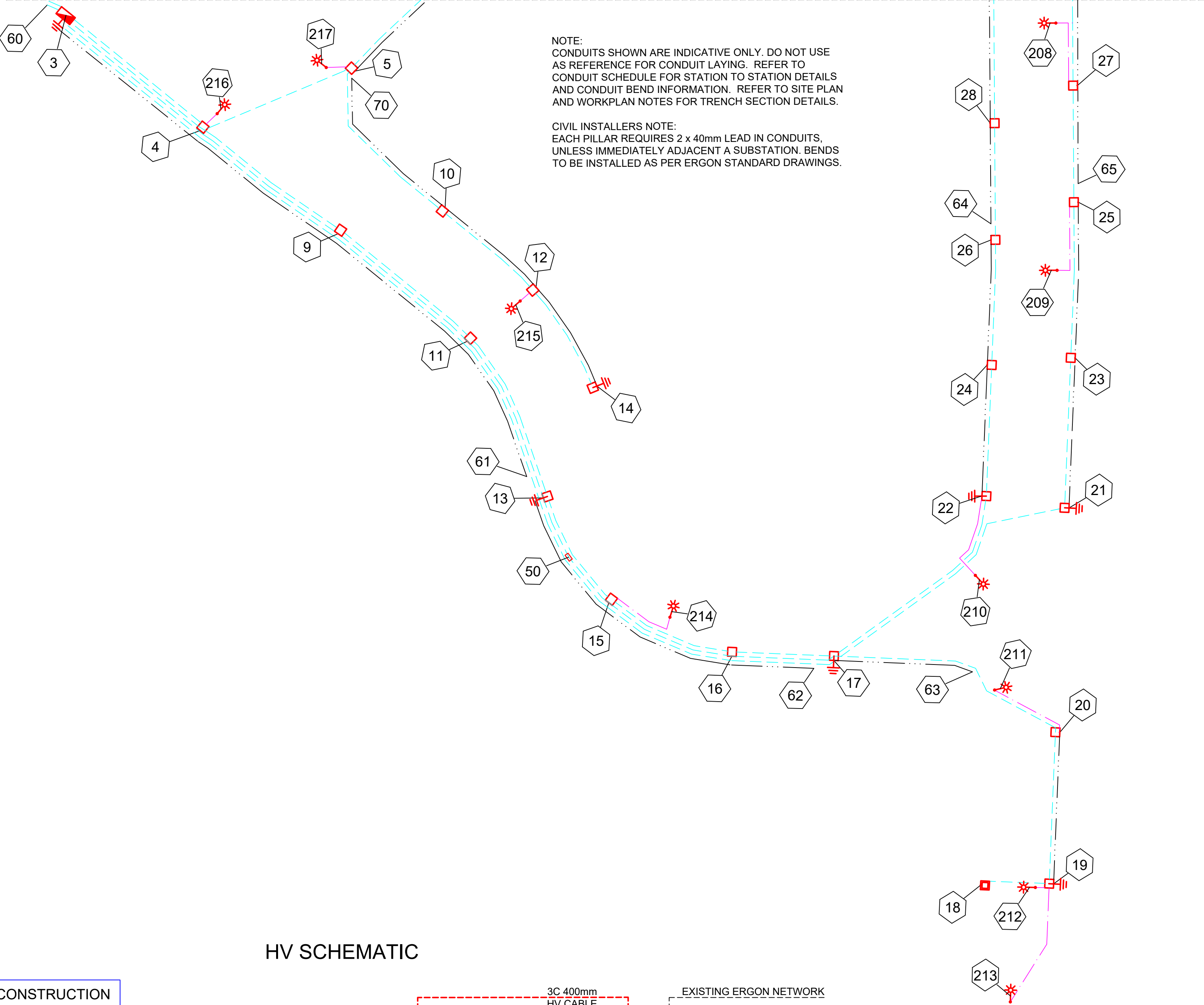
STATION FROM	STATION TO	CALCULATED	RECORDED
2	1	10,758.75 N	N



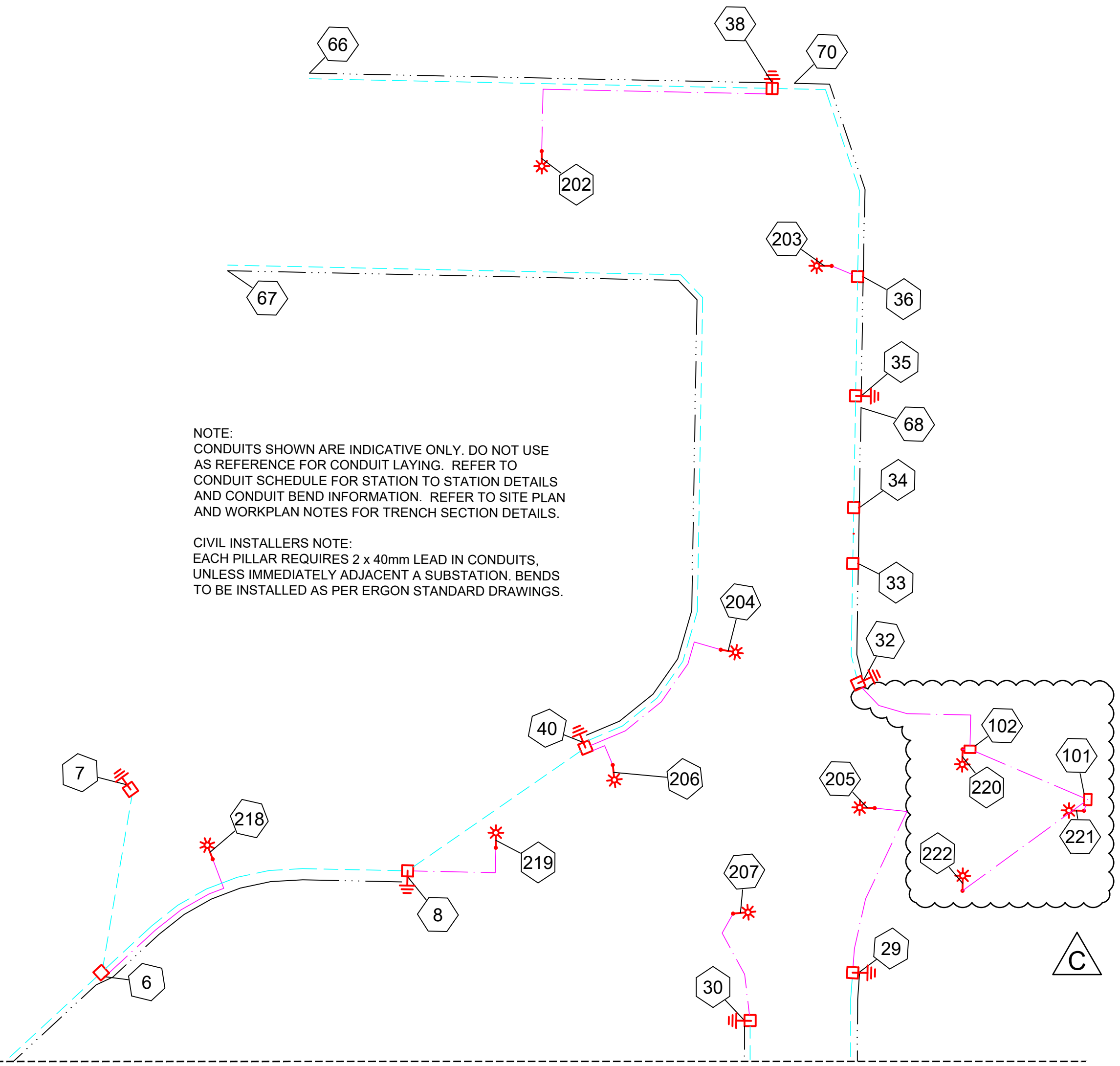
--	--	--	--	--	--	--	--	--	--	--	--	--	--	--	--	--	--	--	--	--	--	--	--	--	--	--	--	--	--	--	--	--	--	--	--	--	--	--	--	--	--	--	--	--	--	--	--	--	--	--	--	--	--	--	--	--	--	--	--	--	--	--	--	--	--	--	--	--	--	--	--	--	--	--	--	--	--	--	--	--	--	--	--	--	--	--	--	--	--	--	--	--	--	--	--	--	--	--	--	--	--	--	--	--	--	--	--	--	--	--	--	--	--	--	--	--	--	--	--	--	--	--	--	--	--	--	--	--	--	--	--	--	--	--	--	--	--	--	--	--	--	--	--	--	--	--	--	--	--	--	--	--	--	--	--	--	--	--	--	--	--	--	--	--	--	--	--	--	--	--	--	--	--	--	--	--	--	--	--	--	--	--	--	--	--	--	--	--	--	--	--	--	--	--	--	--	--	--	--	--	--	--	--	--	--	--	--	--	--	--	--	--	--	--	--	--	--	--	--	--	--	--	--	--	--	--	--	--	--	--	--	--	--	--	--	--	--	--	--	--	--	--	--	--	--	--	--	--	--	--	--	--	--	--	--	--	--	--	--	--	--	--	--	--	--	--	--	--	--	--	--	--	--	--	--	--	--	--	--	--	--	--	--	--	--	--	--	--	--	--	--	--	--	--	--	--	--	--	--	--	--	--	--	--	--	--	--	--	--	--	--	--	--	--	--	--	--	--	--	--	--	--	--	--	--	--	--	--	--	--	--	--	--	--	--	--	--	--	--	--	--	--	--	--	--	--	--	--	--	--	--	--	--	--	--	--	--	--	--	--	--	--	--	--	--	--	--	--	--	--	--	--	--	--	--	--	--	--	--	--	--	--	--	--	--	--	--	--	--	--	--	--	--	--	--	--	--	--	--	--	--	--	--	--	--	--	--	--	--	--	--	--	--	--	--	--	--	--	--	--	--	--	--	--	--	--	--	--	--	--	--	--	--	--	--	--	--	--	--	--	--	--	--	--	--	--	--	--	--	--	--	--	--	--	--	--	--	--	--	--	--	--	--	--	--	--	--	--	--	--	--	--	--	--	--	--	--	--	--	--	--	--	--	--	--	--	--	--	--	--	--	--	--	--	--	--	--	--	--	--	--	--	--	--	--	--	--	--	--	--	--	--	--	--	--	--	--	--	--	--	--	--	--	--	--	--	--	--	--	--	--	--	--	--	--	--	--	--	--	--	--	--	--	--	--	--	--	--	--	--	--	--	--	--	--	--	--	--	--	--	--	--	--	--	--	--	--	--	--	--	--	--	--	--	--	--	--	--	--	--	--	--	--	--	--	--	--	--	--	--	--	--	--	--	--	--	--	--	--	--	--	--	--	--	--	--	--	--	--	--	--	--	--	--	--	--	--	--	--	--	--	--	--	--	--	--	--	--	--	--	--	--	--	--	--	--	--	--	--	--	--	--	--	--	--	--	--	--	--	--	--	--	--	--	--	--	--	--	--	--	--	--	--	--	--	--	--	--	--	--	--	--	--	--	--	--	--	--	--	--	--	--	--	--	--	--	--	--	--	--	--	--	--	--	--	--	--	--	--	--	--	--	--	--	--	--	--	--	--	--	--	--	--	--	--	--	--	--	--	--	--	--	--	--	--	--	--	--	--	--	--	--	--	--	--	--	--	--	--	--	--	--	--	--	--	--	--	--	--	--	--	--	--	--	--	--	--	--	--	--	--	--	--	--	--	--	--	--	--	--	--	--	--	--	--	--	--	--	--	--	--	--	--	--	--	--	--	--	--	--	--	--	--	--	--	--	--	--	--	--	--	--	--	--	--	--	--	--	--	--	--	--	--	--	--	--	--	--	--	--	--	--	--	--	--	--	--	--	--	--	--	--	--	--	--	--	--	--	--	--	--	--	--	--	--	--	--	--	--	--	--	--	--	--	--	--	--	--	--	--	--	--	--	--	--	--	--	--	--	--	--	--	--	--	--	--	--	--	--	--	--	--	--	--	--	--	--	--	--	--	--	--	--	--	--	--	--	--	--	--	--	--	--	--	--	--	--	--	--	--	--	--	--	--	--	--	--	--	--	--	--	--	--	--	--	--	--	--	--	--	--	--	--	--	--	--	--	--	--	--	--	--	--	--	--	--	--	--	--	--	--	--	--	--	--	--	--	--	--	--	--	--	--	--	--	--	--	--	--	--	--	--	--	--	--	--	--	--	--	--	--	--	--	--	--	--	--	--	--	--	--	--	--	--	--	--	--	--	--	--	--	--	--	--	--	--	--	--	--	--	--	--	--	--	--	--	--	--	--	--	--	--	--	--	--	--	--	--	--	--	--	--	--	--	--	--	--	--	--	--	--	--	--	--	--	--	--	--	--	--	--	--	--	--	--	--	--	--	--	--	--	--	--	--	--	--	--	--	--	--	--	--	--	--	--	--	--	--	--	--	--	--	--	--	--	--	--	--	--	--	--	--	--	--	--	--	--	--	--	--	--	--	--	--	--	--	--	--	--	--	--	--	--	--	--	--	--	--	--	--	--	--	--	--	--	--	--	--	--	--	--	--	--	--	--	--	--	--	--	--	--	--	--	--	--	--	--	--	--	--	--	--	--	--	--	--	--	--	--	--	--	--	--	--	--	--	--	--	--	--	--	--	--	--	--	--	--	--	--	--	--	--	--	--	--	--	--	--	--	--	--	--	--	--	--	--	--	--	--	--	--	--	--	--	--	--	--	--	--	--	--	--	--	--	--	--	--	--	--	--	--	--	--	--	--	--	--	--	--	--	--	--	--	--	--	--	--	--	--	--	--	--	--	--	--	--	--	--	--	--	--	--	--	--	--	--	--	--	--	--	--	--	--	--	--	--	--	--	--	--	--	--	--	--	--	--	--	--	--	--	--	--	--	--	--	--	--	--	--	--	--	--	--	--	--	--	--	--	--	--	--	--	--	--	--	--	--	--	--	--	--	--	--	--	--	--	--	--	--	--	--	--	--	--	--	--	--	--	--	--	--	--	--	--	--	--	--	--	--	--	--	--	--	--	--	--	--	--	--	--	--	--	--	--	--	--	--	--	--	--	--	--	--	--	--	--	--	--	--	--	--	--	--	--	--	--	--	--	--	--	--	--	--	--	--	--	--	--	--	--	--	--	--	--	--	--	--	--	--	--	--	--	--	--	--	--	--	--	--	--	--	--	--	--	--	--	--	--	--	--	--	--	--	--	--	--	--	--	--	--	--	--	--	--	--	--	--	--	--	--	--	--	--	--	--	--	--	--	--	--	--	--	--	--	--	--	--	--	--	--	--	--	--	--	--	--	--	--	--	--	--	--	--	--	--	--	--	--	--	--	--	--	--	--	--	--	--	--	--	--	--	--	--	--	--

CONDUIT SCHEMATIC A

FOR CONTINUATION REFER TO CONDUIT SCHEMATIC B ON SHEET 2926-E04

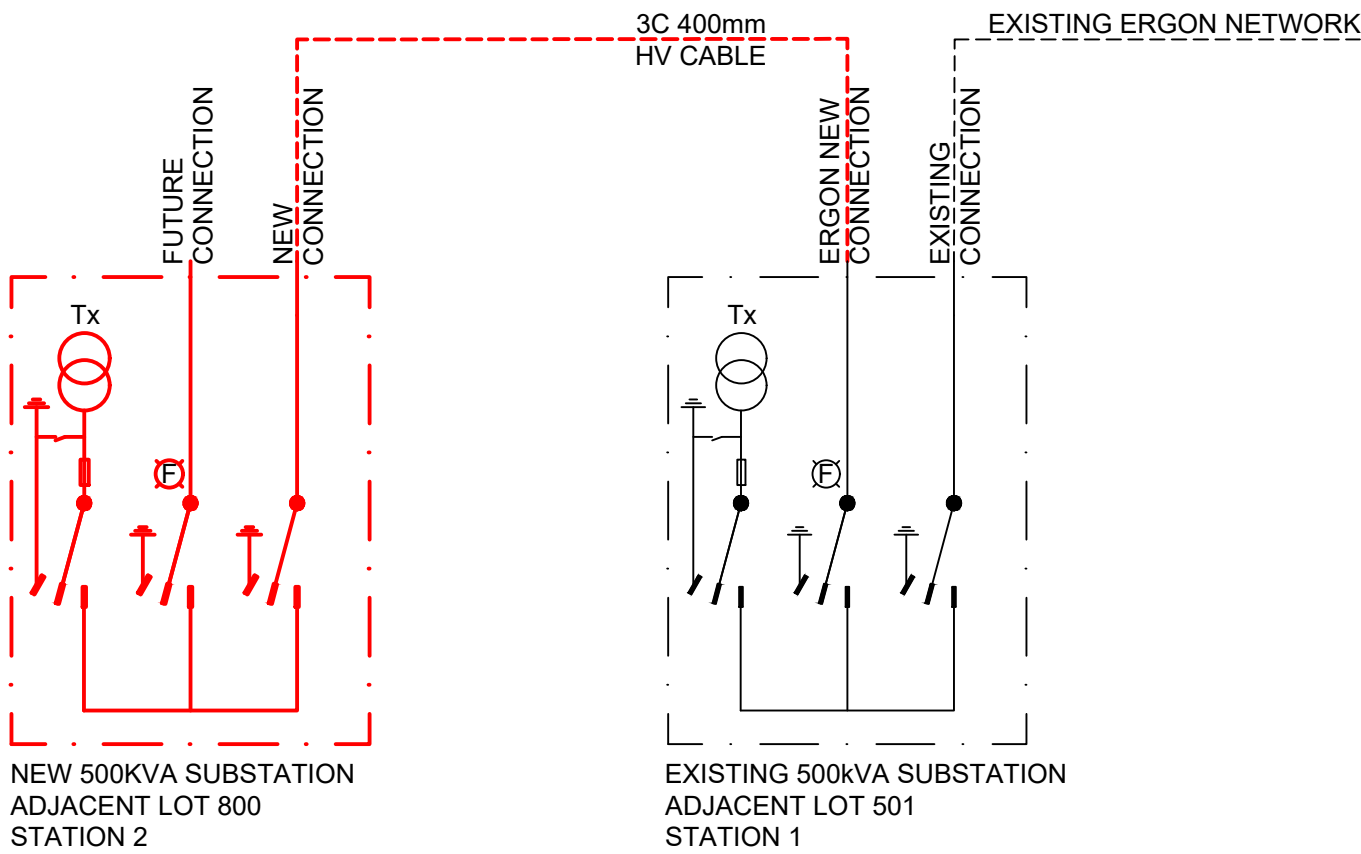


CONDUIT SCHEMATIC B



FOR CONTINUATION REFER TO CONDUIT SCHEMATIC A ON SHEET 2926-E03

HV SCHEMATIC



FOR CONSTRUCTION

ON COMPLETION, MARK UP THIS PRINT CLEARLY WITH ALL FINAL CHANGES AND RETURN TO PROJECT MANAGER

CHANGES: YES/NO

ELECTRICAL CONTRACTOR

NAME: _____

SIGNATURE: _____


DATE: _____


CIVIL CONTRACTOR

NAME: Anthony Burke

SIGNATURE: *Anthony Burke*

Date: 08.06.2021

								CLIENT: EASTPOINT MACKAY PTY LTD				<div><p>Simon Perkins & Associates consulting engineers</p><p>Tel: (07) 4032 3311 Fax: (07) 4032 5633 PO Box 664 North Cairns QLD 4870 Email Address - admin@spaconsulting.com.au <small>A business unit of SPA Consulting Engineers (Q/LD) Pty Ltd a/c n. 0102844416</small></p></div>				<div><p>LEGEND</p><p>--- ZERO LOT BOUNDARY --- CABLE EXISTING □ SUBSTATION □ COMMERCIAL/ INDUSTRIAL PILLAR</p><p>--- HV DUCT --- CABLE PLANNED ✓ HV ISOLATING DEVICE ▣ DISTRIBUTION CABINET</p><p>--- LV DUCT --- CABLE RECOVER LV ISOLATING DEVICE * STREETLIGHT</p><p>--- LIGHTING DUCT --- EQUIPMENT EXISTING - - EARTH</p><p>--- 35mm sq ANNEALED BARE COPPER EARTH --- EQUIPMENT RECOVER □ NORMAL PILLAR - - EARTH</p><p>--- EQUIPMENT PLANNED □ CROSS ROAD PILLAR □ POLE</p><p> □ LINKING PILLAR □ CABLE JOINT</p></div>					
				C/- URBEK PTY LTD P.O BOX 197 WYNNUM QLD 4178 Ph. 07 3906 7444 Fax																	
				CIVIL ENGINEER EMPPOWER ENGINEERS																	
				P.O. BOX 197 WYNNUM QLD 4178 Ph. 07 3893 7000 Fax 07 38934088																	
D	30/06/20	UPDATED LAYOUT - NEW CAR PARK	MD																		
C	11/06/20	FOR APPROVAL - RD XING ADDED	MD																		
B	06/05/20	LAYOUT CHANGED & ADDED SUB	MD																		
A	06/12/19	FOR CONSTRUCTION	MD																		
Code	Date	Description	Revised	Code	Date	Description	Approved														

Drawing Title		Date	DECEMBER 2019
EAST POINT MACKAY STAGE 1A UDC UG ELECTRICAL RETICULATION CONDUIT SCHEMATIC A AND B		Scale	NTS
		Drawn	MD
RPEQ Design Certification Jane Errey 5883			
Sheet		3 OF 6	
Project Description EAST POINT MACKAY STAGE 1A MACKAY HARBOUR, QLD 4740		ERGON Project Number WR-1384495	SPA Drawing Number 2926-E03
		Revision D	

Rev Date 24-1-18	ERGON SCHEDULE OF WORKS					
STN NO	SITE LABEL	ACTION	CONSTRUCTION CLASS	CONSTRUCTION CODE	DRAWING NUMBER	REMARKS
1		INSTALL - ERGON	HV CABLE TERMINATION	11 PM/CTC/BDJH/400T	5373	ERGON TO TERMINATE HV COIL CABLE AT STN 1
1		INSTALL - ERGON	LV CABLE TERMINATION	LV CT PM11/240	5087	ERGON TO TERMINATE LV COIL CABLE AT STN 1
41		INSTALL - ERGON	PILLAR UPGRADE	LV PNU1-2/240	5074	ERGON TO UPGRADE EXISTING PILLAR TO 2-WAY AT STN 41

<h1>FOR CONSTRUCTION</h1>	
ON COMPLETION, MARK UP THIS PRINT CLEARLY WITH ALL FINAL CHANGES AND RETURN TO PROJECT MANAGER	
CHANGES: YES/NO	
ELECTRICAL CONTRACTOR	
NAME:	
SIGNATURE:	
DATE:	
<div>CIVIL CONTRACTOR</div> <div>NAME: Anthony Burke</div> <div>SIGNATURE: <i>Anthony Burke</i></div> <div>DATE: 08.06.2021</div>	

[illegible]

Rev Date 24-1-18	CONSTRUCTION SCHEDULE 1/2								
STN NO	SITE LABEL	POLE ALIGNMENT	POLE SETTING DEPTH	ACTION	CONSTRUCTION CLASS	CONSTRUCTION CODE	DRAWING NUMBER	POSITION ON POLE	REMARKS
1				EXISTING	EARTH				
1				INSTALL - ERGON	HV CABLE TERMINATION	11 PM/CTC/8DJH/400T	5373		ERGON TO INSTALL CABLE TERMINATION FOR CABLE FROM STN 1 TO STN 2
1				INSTALL - ERGON	LV CABLE TERMINATION	LV CT PM11/240	5087		ERGON TO INSTALL CABLE TERMINATION FOR CABLE FROM STN 1 TO STN 38 .
1				EXISTING	SUBSTATION FOUNDATION				
1	11295288			EXISTING	SUBSTATION INC HV SWITCHGEAR				
2				INSTALL	EARTH	E PM11/COM	5013		
2				INSTALL	HV CABLE TERMINATION	11 PM/CTC/8DJH/400T	5373		HV CABLE TERMINATION FOR CABLE FROM STN 2 TO STN 1
2				INSTALL	LV CABLE TERMINATION	LV CT PM11/240	5087		CABLE TERMINATION FOR CABLE FROM STN 2 TO STN 3.
2				INSTALL	LV CABLE TERMINATION	LV CT PM11/240	5087		CABLE TERMINATION FOR CABLE FROM STN 2 TO STN 3
2				EXISTING	SUBSTATION FOUNDATION				
2				INSTALL	SUBSTATION INC HV SWITCHGEAR	PM 11/500/8DJH 2S1F	5191		REFER TO NOTE 31.
3				INSTALL	DISTRIBUTION CABINET	LV DC6/1 4/PC	5136		INSTALL OFFSET FROM TRUNCATION AS SHOWN.
3				INSTALL	EARTH	E MEN/DC	5085		
3				INSTALL	LV CABLE TERMINATION	LV CT PM11/240	5087		CABLE TERMINATION FOR CABLE FROM STN 4
3				INSTALL	LV CABLE TERMINATION	LV CT PM11/240	5087		CABLE TERMINATION FOR CABLE FROM STN 2. REFER TO NOTE 22.
3				INSTALL	LV CABLE TERMINATION	LV CT PM11/240	5087		CABLE TERMINATION FOR CABLE FROM STN 2. REFER TO NOTE 22.
3				INSTALL	LV CABLE TERMINATION	LV CT PM11/240	5087		CABLE TERMINATION FOR CABLE FROM STN 21
3				INSTALL	LV CABLE TERMINATION	LV CT PM11/240	5087		CABLE TERMINATION FOR CABLE FROM STN 22
3				INSTALL	LV CABLE TERMINATION	LV CT PM11/240	5087		CABLE TERMINATION FOR CABLE FROM STN 9
4				INSTALL	PILLAR	LV PN2/6S/240	5026		
5				INSTALL	EARTH	E MEN/PIL	5085		
5				INSTALL	PILLAR	LV PN3/6S/240	5027		INSTALL PILLAR OFFSET TOWARDS LOT 57. REFER TO NOTE 23
6				INSTALL	PILLAR	LV PN3/6S/240	5027		
7				INSTALL	EARTH	E MEN/PIL	5085		
7				INSTALL	PILLAR	LV PN1/6/240	5025		INSTALL PILLAR OFFSET TOWARDS LOT 506 TO AVOID SEWER. REFER TO NOTE 23
8				INSTALL	PILLAR	LV PN2/6S/240	5026		INSTALL PILLAR OFFSET TOWARDS LOT 39. REFER TO NOTE 23
9				INSTALL	PILLAR	LV PN2/6/240	5026		INSTALL PILLAR OFFSET TOWARDS LOT 35. REFER TO NOTE 23
10				INSTALL	PILLAR	LV PN2/6/240	5026		OFFSET PILLAR TOWARDS LOT 56 AS SHOWN. REFER TO NOTE 23.
11				INSTALL	PILLAR	LV PN2/6/240	5026		
12				INSTALL	PILLAR	LV PN2/6S/240	5026		OFFSET PILLAR TOWARDS LOT 55 AS SHOWN. REFER TO NOTE 23.
13				INSTALL	EARTH	E MEN/PIL	5085		
13				INSTALL	PILLAR	LV PN2/6/240	5026		INSTALL PILLAR OFFSET TOWARDS LOT 31. REFER TO NOTE 23
14				INSTALL	EARTH	E MEN/PIL	5085		
14				INSTALL	PILLAR	LV PN1/6/240	5025		
15				INSTALL	PILLAR	LV PN2/6S/240	5026		
16				INSTALL	PILLAR	LV PN2/6/240	5026		INSTALL PILLAR OFFSET TOWARDS LOT 27. REFER TO NOTE 15 & 23
17				INSTALL	EARTH	E MEN/PIL	5085		
17				INSTALL	PILLAR	LV PN2/6/240	5026		INSTALL PILLAR OFFSET TOWARDS LOT 25. REFER TO NOTE 23
18				INSTALL	PILLAR	LV PX/6/16CU	5041		INSTALL PILLAR OFFSET TOWARDS LOT 23 TO AVOID WATER LEADS IN. REFER TO NOTE 23
19				INSTALL	EARTH	E MEN/PIL	5085		
19				INSTALL	PILLAR	LV PN1/6S/240	5025		INSTALL PILLAR OFFSET TOWARDS LOT 20 TO AVOID WATER LEADS IN. ADDITIONAL 32AMP FUSE REQUIRED. REFER TO NOTE 23
20				INSTALL	PILLAR	LV PN2/6S/240	5026		INSTALL PILLAR OFFSET TOWARDS LOT 19. REFER TO NOTE 23
21				INSTALL	EARTH	E MEN/PIL	5085		
21				INSTALL	PILLAR	LV PN2/6/240	5026		INSTALL PILLAR OFFSET TOWARDS LOT 17. REFER TO NOTE 23
22				INSTALL	EARTH	E MEN/PIL	5085		
22				INSTALL	PILLAR	LV PN2/6S/240	5026		INSTALL PILLAR OFFSET TOWARDS LOT 50. REFER TO NOTE 23
23				INSTALL	PILLAR	LV PN2/6/240	5026		
24				INSTALL	PILLAR	LV PN2/6/240	5026		INSTALL PILLAR OFFSET TOWARDS LOT 48. REFER TO NOTE 23
25				INSTALL	PILLAR	LV PN2/6S/240	5026		INSTALL PILLAR OFFSET TOWARDS LOT 13. REFER TO NOTE 23
26				INSTALL	PILLAR	LV PN2/6/240	5026		INSTALL PILLAR OFFSET TOWARDS LOT 46. REFER TO NOTE 26
27				INSTALL	PILLAR	LV PN2/6S/240	5026		INSTALL PILLAR OFFSET TOWARDS LOT 11. REFER TO NOTE 23
28				INSTALL	PILLAR	LV PN2/6/240	5026		INSTALL PILLAR OFFSET TOWARDS LOT 44. REFER TO NOTE 23
29				INSTALL	EARTH	E MEN/PIL	5085		
29				INSTALL	PILLAR	LV PN1/6S/240	5025		
30				INSTALL	EARTH	E MEN/PIL	5085		
30				INSTALL	PILLAR	LV PN1/6S/240	5025		

Rev Date 24-1-18	CONSTRUCTION SCHEDULE 2/2								
STN NO	SITE LABEL	POLE ALIGNMENT	POLE SETTING DEPTH	ACTION	CONSTRUCTION CLASS	CONSTRUCTION CODE	DRAWING NUMBER	POSITION ON POLE	REMARKS
32				INSTALL	EARTH	E MEN/PIL	5085		
32				INSTALL	PILLAR	LV PN1/6S/240	5025		LOCATE PILLAR ON PROPERTY BOUNDARY TRUNCATION AS SHOWN.
33				INSTALL	PILLAR	LV PN2/6/240	5026		INSTALL PILLAR OFFSET TOWARDS LOT 6 TO AVOID WATER LEADS IN. REFER TO NOTE 23
34				INSTALL	PILLAR	LV PN2/6/240	5026		INSTALL PILLAR OFFSET TOWARDS LOT 5. REFER TO NOTE 23
35				INSTALL	EARTH	E MEN/PIL	5085		
35				INSTALL	PILLAR	LV PN2/6/240	5026		INSTALL PILLAR OFFSET TOWARDS LOT 3. REFER TO NOTE 23
36				INSTALL	PILLAR	LV PN2/6S/240	5026		INSTALL PILLAR OFFSET TOWARDS LOT 1. REFER TO NOTE 23
38				INSTALL	EARTH	E MEN/PIL	5085		
38				INSTALL	PILLAR	LV PN2/6S/240	5026		OFFSET PILLAR INTO LOT 501 AS SHOWN TO AVOID WATER LEADS IN. REFER TO NOTE 23
39				EXISTING	EARTH				
39	11295333			EXISTING	PILLAR				P.O.S. FOR LOT 502
40				INSTALL	EARTH	E MEN/PIL	5085		
40				INSTALL	PILLAR	LV PN1/6S/240	5025		LOCATE PILLAR FROM PROPERTY BOUNDARY TRUNCATION AS SHOWN. ADDITIONAL 32AMP FUSE REQUIRED. TO BE UPGRADED TO TWO WAY IN FUTURE
41	11295318			EXISTING	EARTH				
41	11295318			EXISTING	PILLAR				P.O.S. FOR LOT 800. TO BE UPGRADED TO THREE WAY IN THE FUTURE
41				INSTALL - ERGON	PILLAR UPGRADE	LV PNU1-2/240	5074		ERGON ENERGY TO UPGRADE PILLAR TO TWO WAY
42				EXISTING	EARTH				
42	11295323			EXISTING	PILLAR				
43	11295282			EXISTING	PILLAR				P.O.S. FOR LOT 501
44				EXISTING	EARTH				
44	11295344			EXISTING	PILLAR				
50				INSTALL	CABLE JOINT	LV-CJS240C4	5073		REFER TO NOTE 30.
50				INSTALL	CABLE JOINT	LV-CJS240C4	5073		REFER TO NOTE 30.
100	11295319			EXISTING	TYPE 4 LOOP PIT				
101				INSTALL	TYPE 4 LOOP PIT	SUG SLL/PIT	1-4-9-1		REFER TO NOTE 27.
102				INSTALL	TYPE 4 LOOP PIT	SUG SLL/PIT	1-4-9-1		REFER TO NOTE 27.
200	11295337			EXISTING	POLE				
201	11295314			EXISTING	POLE				
202				INSTALL	POLE	SL BPM/75/1 15 CI	1-6-4-1 & 2		INSTALL LIGHT POLE OFFSET 27.48M FROM PROPERTY BOUNDARY. REFER TO NOTE 25
203				INSTALL	POLE	SL BPM/75/1 15 CI	1-6-4-1 & 2		INSTALL LIGHT POLE OFFSET 0.61M FROM PROPERTY BOUNDARY.
204				INSTALL	POLE	SL BPM/90/1 15/UG CI1	1-5-6-1 & 2		INSTALL POLE 2.93M OFFSET FROM PROPERTY BOUNDARY TRUNCATION AS SHOWN. REFER TO NOTE 25
205				INSTALL	POLE	SL BPM/90/1 15/UG CI1	1-5-6-1 & 2		INSTALL A POLE FROM PROPERTY BOUNDARY TRUNCATION AS SHOWN. REFER TO NOTE 25
206				INSTALL	POLE	SL BPM/90/1 15/UG CI1	1-5-6-1 & 2		INSTALL POLE 3.25M OFFSET FROM PROPERTY BOUNDARY TRUNCATION AS SHOWN. REFER TO NOTE 25
207				INSTALL	POLE	SL BPM/90/1 15/UG CI1	1-5-6-1 & 2		INSTALL POLE 1.97M OFFSET FROM PROPERTY BOUNDARY TRUNCATION AS SHOWN. REFER TO NOTE 25
208				INSTALL	POLE	SL BPM/75/1 15 CI	1-6-4-1 & 2		REFER TO NOTE 25.
209				INSTALL	POLE	SL BPM/75/1 15 CI	1-6-4-1 & 2		REFER TO NOTE 25
210				INSTALL	POLE	SL BPM/90/1 30/UG CI1	1-5-6-1 & 2		INSTALL POLE 2.12M OFFSET FROM PROPERTY BOUNDARY TRUNCATION AS SHOWN. REFER TO NOTE 25
211				INSTALL	POLE	SL BPM/75/1 15 CI	1-6-4-1 & 2		INSTALL LIGHT POLE FROM PROPERTY BOUNDARY TRUNCATION AS SHOWN. REFER TO NOTE 25
212				INSTALL	POLE	SL BPM/75/1 15 CI	1-6-4-1 & 2		
213				INSTALL	POLE	SL BPM/75/1 15 CI	1-6-4-1 & 2		INSTALL POLE 13.97M OFFSET FROM PROPERTY BOUNDARY AS SHOWN. REFER TO NOTE 25
214				INSTALL	POLE	SL BPM/75/1 15 CI	1-6-4-1 & 2		REFER TO NOTE 25
215				INSTALL	POLE	SL BPM/75/1 15 CI	1-6-4-1 & 2		
216				INSTALL	POLE	SL BPM/75/1 15 CI	1-6-4-1 & 2		
217				INSTALL	POLE	SL BPM/90/1 15/UG CI1	1-5-6-1 & 2		INSTALL POLE FROM PROPERTY BOUNDARY TRUNCATION & PERPENDICULAR TO ROAD CENTRELINE AS SHOWN. REFER TO NOTE 25
218				INSTALL	POLE	SL BPM/75/1 15 CI	1-6-4-1 & 2		INSTALL POLE 2.24M OFFSET FROM PROPERTY BOUNDARY TRUNCATION AS SHOWN. REFER TO NOTE 25
219				INSTALL	POLE	SL BPM/75/1 15 CI	1-6-4-1 & 2		INSTALL POLE 1.39M OFFSET FROM PROPERTY BOUNDARY TRUNCATION. REFER TO NOTE 25
220				INSTALL	POLE	SL BPM/75/1 15 CI	1-6-4-1 & 2		INSTALL POLE 12.5M OFFSET FROM PROPERTY BOUNDARY AS SHOWN. REFER TO NOTE 25 & 33
221				INSTALL	POLE	SL BPM/75/1 15 CI	1-6-4-1 & 2		INSTALL POLE 11.78M OFFSET FROM PROPERTY BOUNDARY AS SHOWN. REFER TO NOTE 25 & 33
222				INSTALL	POLE	SL BPM/75/1 15 CI	1-6-4-1 & 2		INSTALL POLE 12.5M OFFSET FROM PROPERTY BOUNDARY AS SHOWN. REFER TO NOTE 25 & 33

FOR CONSTRUCTION

ON COMPLETION, MARK UP THIS PRINT
CLEARLY WITH ALL FINAL CHANGES AND
RETURN TO PROJECT MANAGER

CHANGES: YES/NO

ELECTRICAL CONTRACTOR

NAME: _____

SIGNATURE: _____

DATE: _____

CIVIL CONTRACTOR

NAME: Anthony Burke

SIGNATURE: *asbmk*

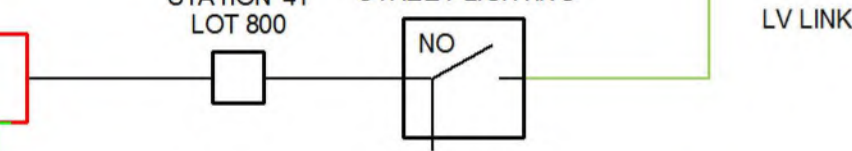
Date: 08.06.2021

[illegible]

A diagram showing a triangle with a horizontal line segment inside it, labeled 'D'.

EXISTING 500 KVA
SUBSTATION
STATION 1

FOR EXISTING NETWORK
REFER TO SPA DWG. 2915 AND
ERGON ENER WR-1315974









any use of this drawing is forbidden without this company's consent ©




spa
Simon Perkins & Associates
consulting engineers

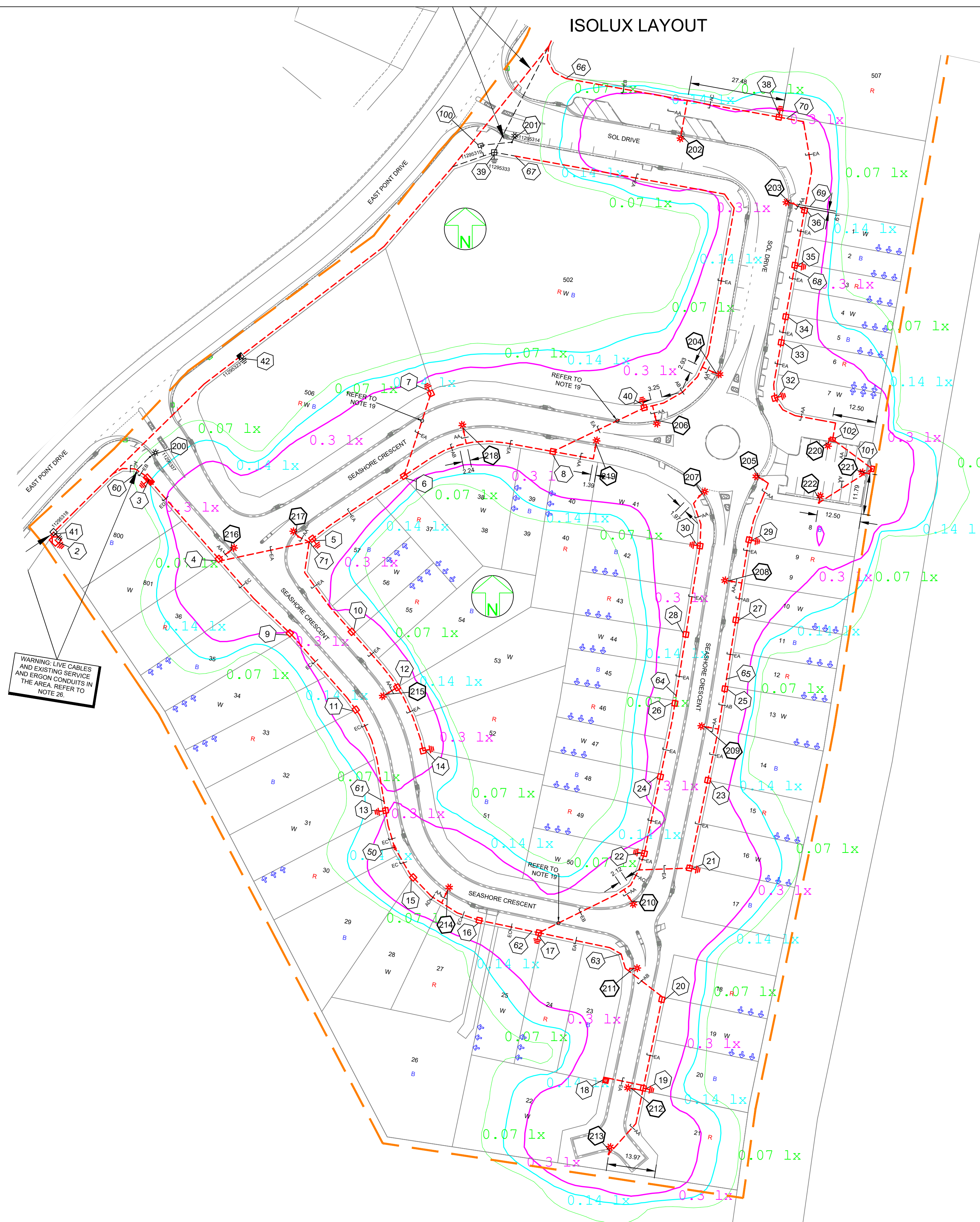
Tel: (07) 4032 3311 Fax: (07) 4032 5633
PO Box 664 North Cairns QLD 4870
Email Address - admin@spaconsulting.com.au
A business unit of SPA Consulting Engineers (QILD) Pty Ltd a.c.n. 010644416

- ☐ SUBSTATION
- ☒ HV ISOLATING
- ☐ LV ISOLATING
- ☐ NORMAL PILLAR
- ☒ CROSS ROAD
- ☒ LINKING PILLAR

-  COMMERCIAL/ INDUSTRIAL PILLAR
-  DISTRIBUTION CABINET
-  STREETLIGHT
-  EARTH
-  POLE
-  CABLE JOINT

Drawing Title	Date	DECEMBER 2019	
EAST POINT MACKAY STAGE 1A UDC UG ELECTRICAL RETICULATION UNDERGROUND CABLE SCHEDULE AND LV SCHEMATIC	Scale	NTS	
	Drawn	MD	
	RPEQ Design Certification Jane Errey 6863		
	Sheet	6 OF 6	
	ERGON Project Number WR-1384495	SPA Drawing Number 2926-E06	Revision D

ISOLUX LAYOUT



FOR CONSTRUCTION

ON COMPLETION, MARK UP THIS PRINT
CLEARLY WITH ALL FINAL CHANGES AND
RETURN TO PROJECT MANAGER

CHANGES: YES/NO

ELECTRICAL CONTRACTOR

NAME: _____

SIGNATURE: _____

DATE: _____

CIVIL CONTRACTOR

NAME: Anthony Burke

SIGNATURE: *aebw*

Date: 08.06.2021

[illegible]